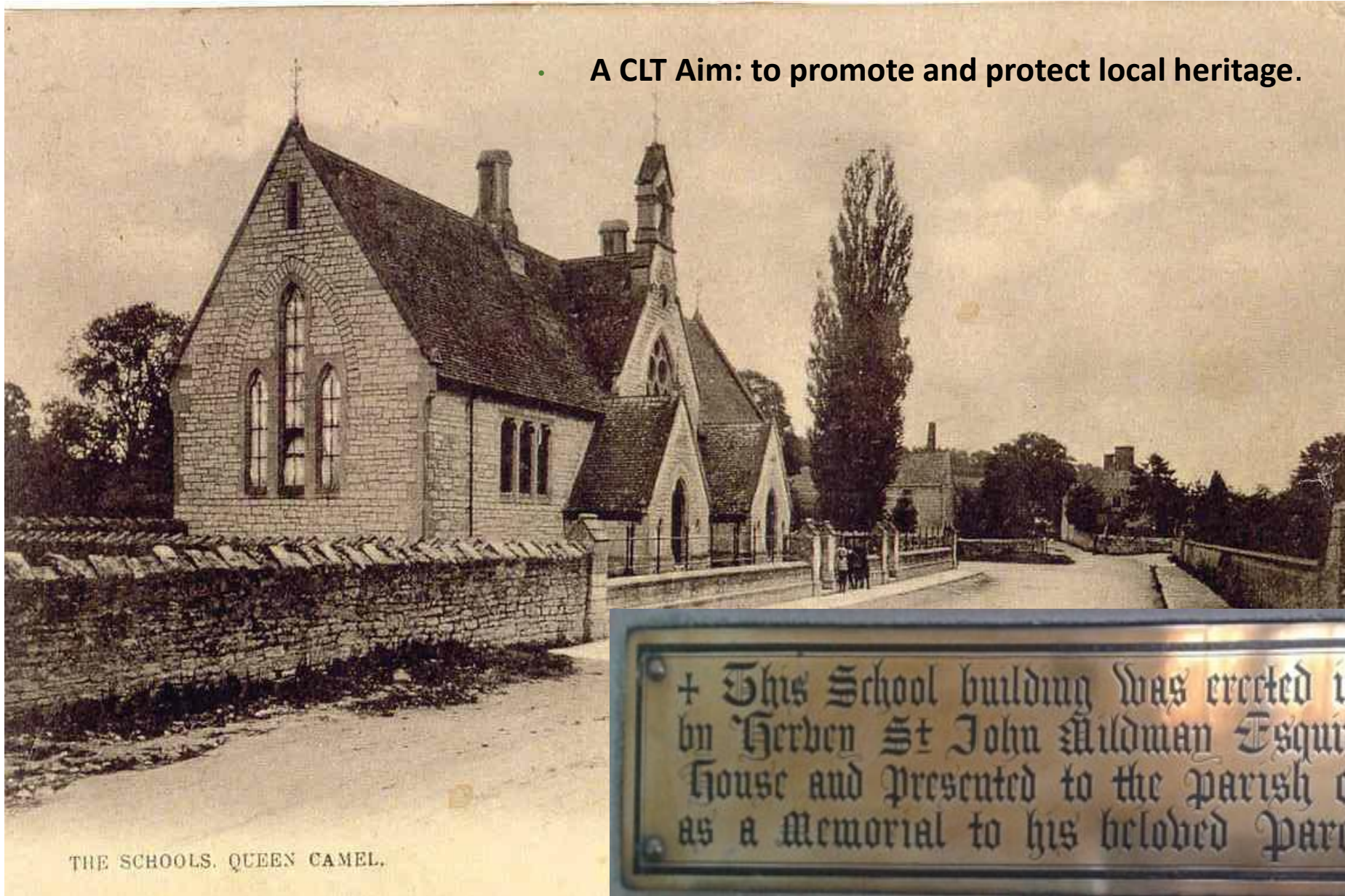




The Long Road to restoring the Old School in Queen Camel (a pictorial story of our first ten months)

- A CLT Aim: to promote and protect local heritage.





The Long Road to restoring the Old School - 2019/2020



The site at the date of acquisition





Ugly rear additions. In year two we plan to paint these walls as a medium term improvement.

Property acquired 3 p.m. 3rd May 2019

Queen Camel Community Land Trust is thrilled
to announce the acquisition of

THE OLD SCHOOL

...being developed into a community centre with
work spaces and well-being facilities...



Enquiries:
E-mail: qcclt@hotmail.co.uk



power to
change

business in
community
hands



Wild and overgrown at time of purchase

A first priority was to have a name and logo



The Board decided 'Old School' and the logo was created by Harris Lam
(HARRISLAM.CO.UK)

Our Journey – three distinct areas to refurbish

Area 1: the 1920s suite of classrooms with added portacabin and a separate Hall
see Slides 10 to 31



Area 2: the Victorian Schoolhouse
see Slides 32 to 41



Area 3: the exterior - gardens, playgrounds and vehicle park
see Slides 42 to 48

Plus: Miscellaneous
see Slides 48 to 53



The old school hall, now redecorated and (HFP) our first tenant's, pre-loved furniture outlet



Furniture re-use social project reborn

Many people may remember Furnicare, a project in Yeovil providing furniture and household items to people on low incomes to people living in the South Somerset and Dorset areas, which closed in August 2018.

Now some of its volunteers are working hard to get the project up and running again.

With the help of a local company HomeFirst Plus they have found new premises in Queen Camel where they will be operating a collection and delivery service of good secondhand furniture and household items, as well as a shop where people can view. The group has the backing of Yarlington Housing Association again and plans to be up and running by 1st October.

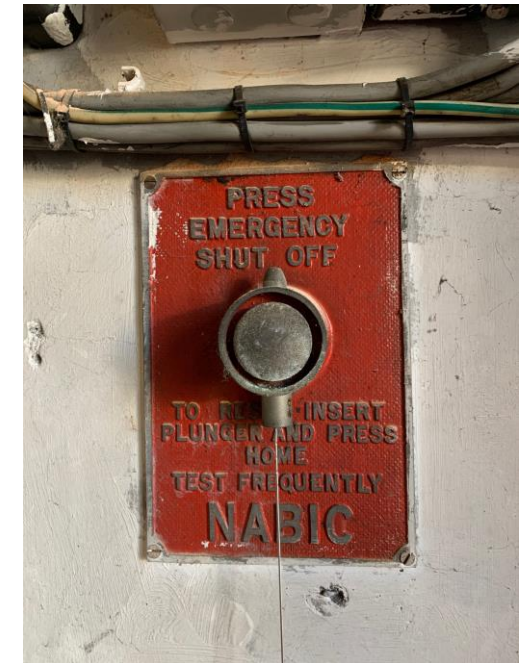
HomeFirst Plus Furniture Reuse sells and accepts donations of items like sofas, white goods, tables and chairs, electrical items, beds and (clean) mattresses, bedroom furniture, chests of drawers, wardrobes and more. If you're looking to furnish your home at a reduced price, or have unwanted good quality items you'd like to donate, contact HomeFirst Plus at The Old School, High Street, Queen Camel, Yeovil, BA22 7NH, tel: 01935 319006, email office@homefirstplus.co.uk

B002 & 3 now home to HFP



HFP offers every aid from bath and shower facilities to armchairs and electric wheelchairs for those with physical disabilities – plus they run their admin centre for their affordable housing enterprise.

B004 – the boiler room — a costly upgrade in the 5-year plan



B012/12A – newly created waiting room with CLT office beyond

Before



Now



B013 – Recently decorated therapy or office room – available for letting.

Before



Now – gifted curtains still to be hung



B014 - Therapy Room – the first to be occupied by...

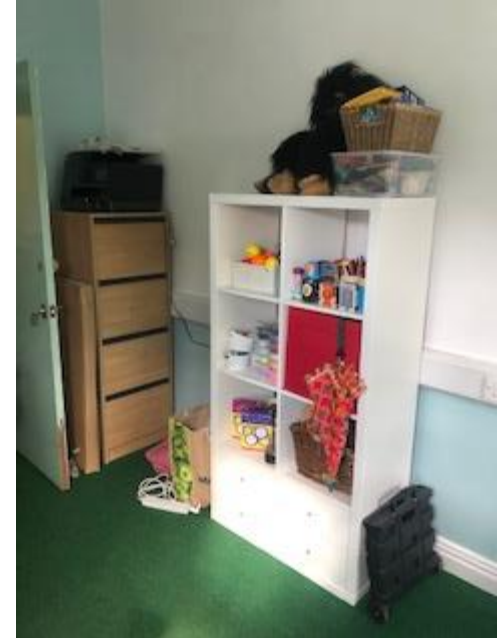
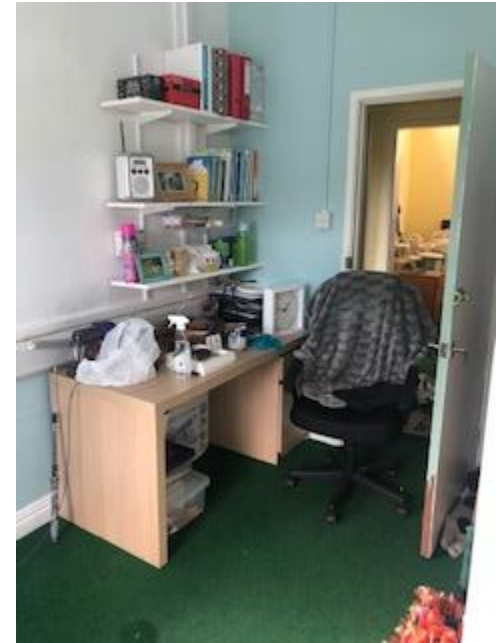
Before



During Decoration



... Amie - her 'Helping Hands' therapy room



B007 – Therapy room – booking times available

Before



Now (and used by Marilyn for stress relief therapy)



B009 – Hot Desk and meeting room - now

Following completion of electrical work including replacement LED lighting, decorating was planned for spring 2020 but coronavirus has delayed this.



B010 – Decorated and available for letting

Before



Now



B010 – looking the other way – the art is made from recycled materials



B011 - the Corridor – now. To become our art gallery



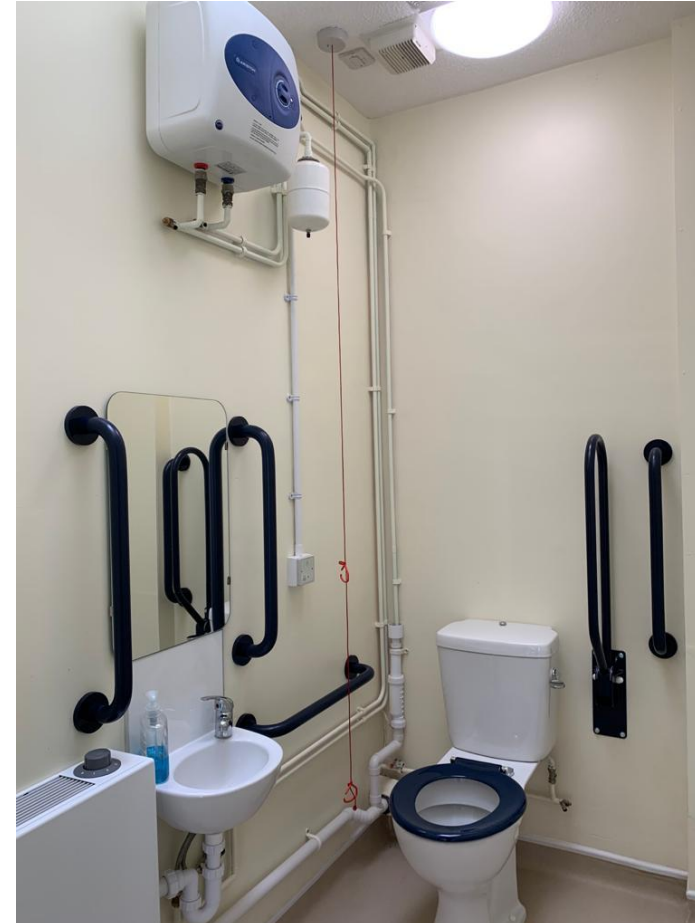
Every internal wall and door across the site was the same institutional green and yellow

B016 – Disabled Toilet, now fully refurbished

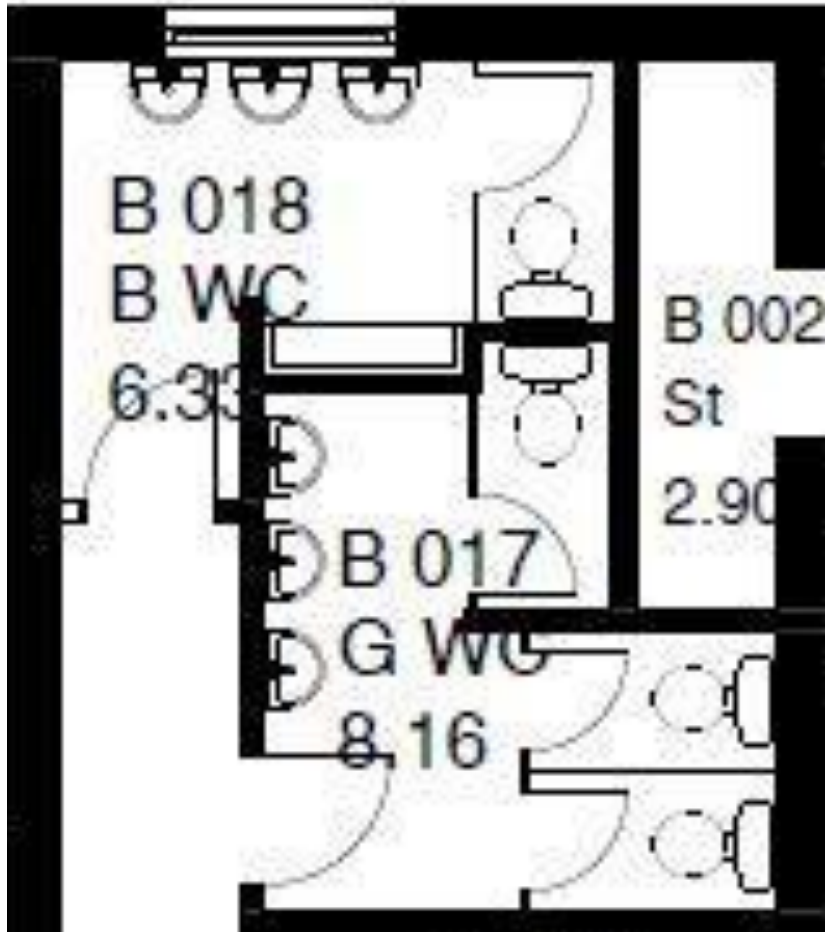
Before



Now



B017/018 – Previous Boys' & Girls' Toilets – awaiting reconfiguration – to include Cleaner's store



'Before' photos to come – quotations being negotiated with work previously planned for summer/autumn 2020 but coronavirus has inserted an indefinite delay.

Link between Blocks B and TB

Before



Now



... and Jenny's work-in-progress



The Long Road to restoring the Old School - 2019/2020

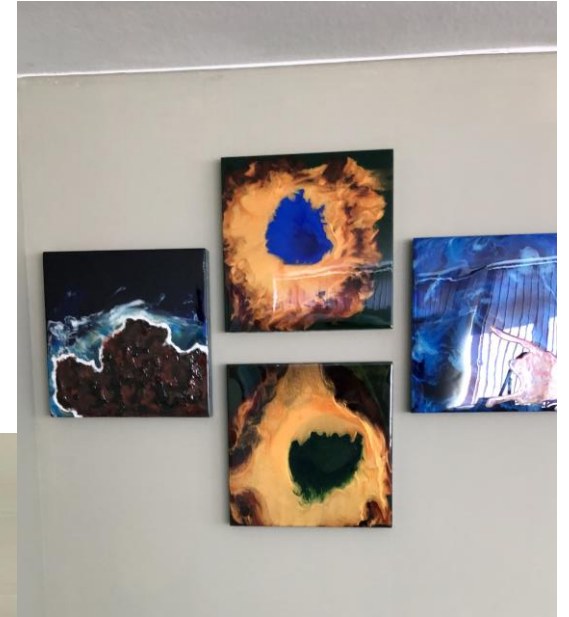
TB001 – at time of purchase and during work-in-progress ...



... and now Chris Edon's art studio



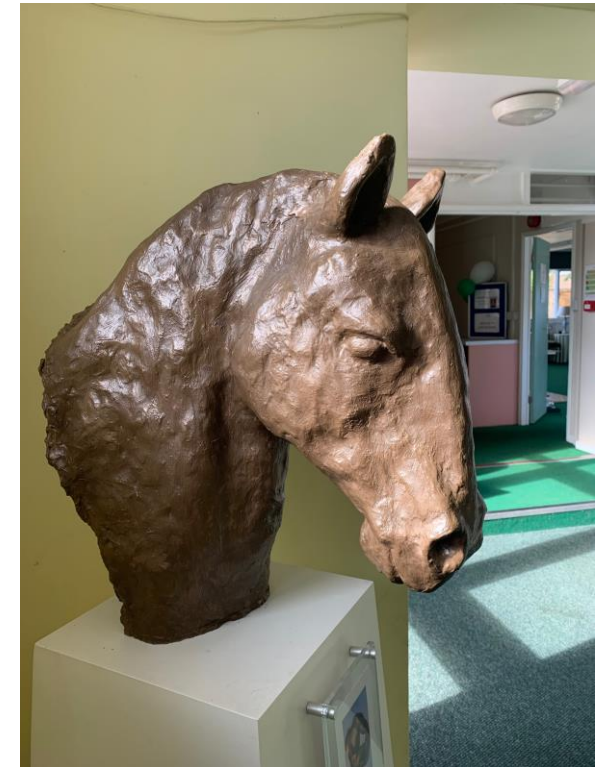
Chris Edon - Art



... and more of Chris's art



Chris Edon - Art



TB002 – Studio – spaces available for letting.



Jenny Kosicki has set up 'the Sewing Box' in one quarter of this room. In addition to all sewing needs for the Old School, Jenny can sew for anyone.

TB004 – previous pre-school cloaks, now Refreshment Station for staff, tenants and visitors

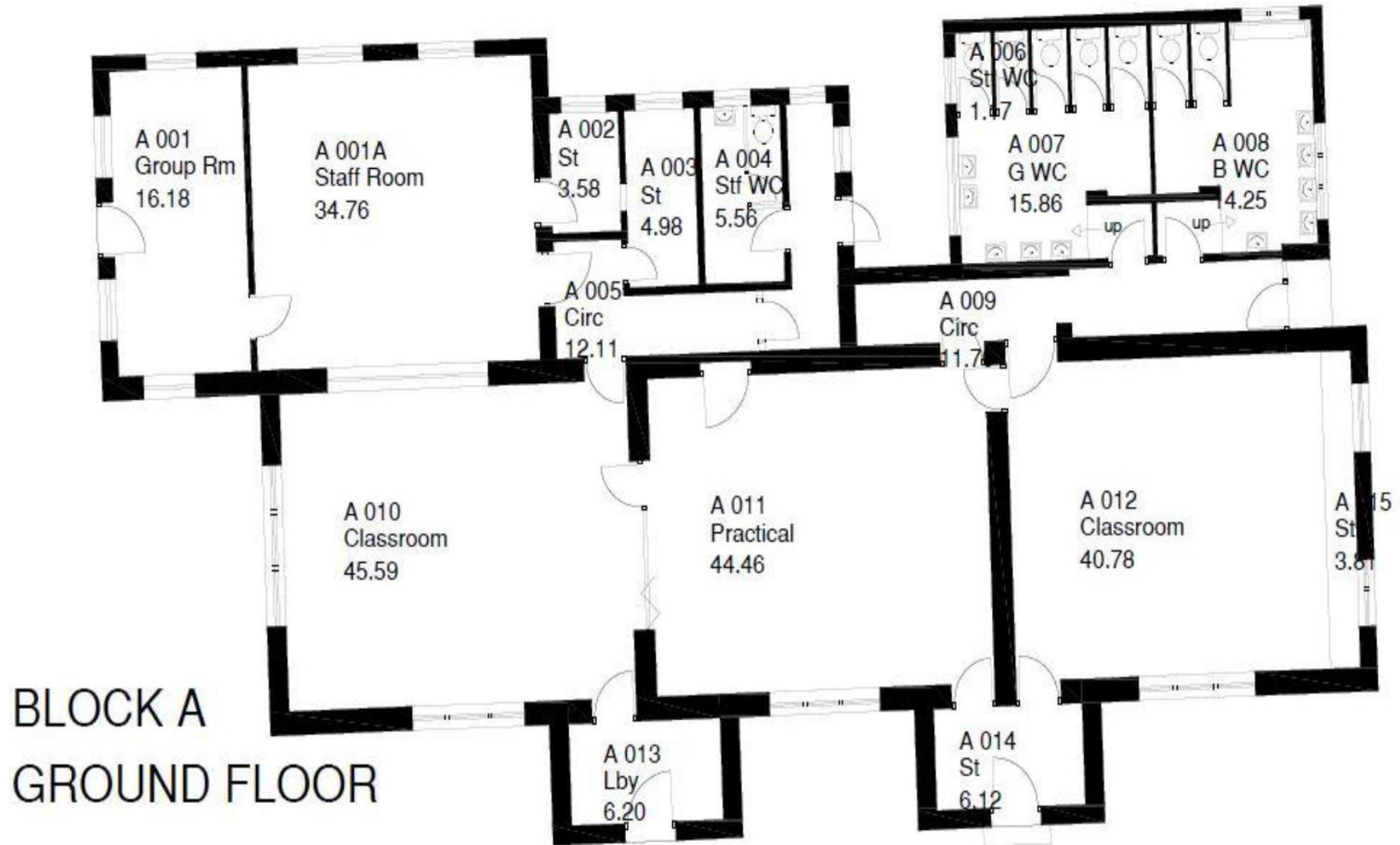
Before



Now – the sink and unit was transferred from A010 in the Victorian Schoolhouse



Area 2: the Victorian Schoolhouse



BLOCK A
GROUND FLOOR

A008 – boys' toilet area. A007 girls' next door has 7 toilets.



In the past, so many toilets and washbasins for so many children!

The plan is for this area to become a 'Changing Place Shower and Toilet' facility – example below.



A010 – Function room and future café



Was scheduled for decoration during sprint 2020. Note, sink unit in right corner is now transferred to Refreshment Station (slide 30 above).

B010 being used as a Function Room with display of art made from recycled materials





Window and girl figure in B011 (each of the three main rooms in the Victorian Schoolhouse has four children, one at the base of each roof beam).



B011 in process of decoration – lighting changed to LED.



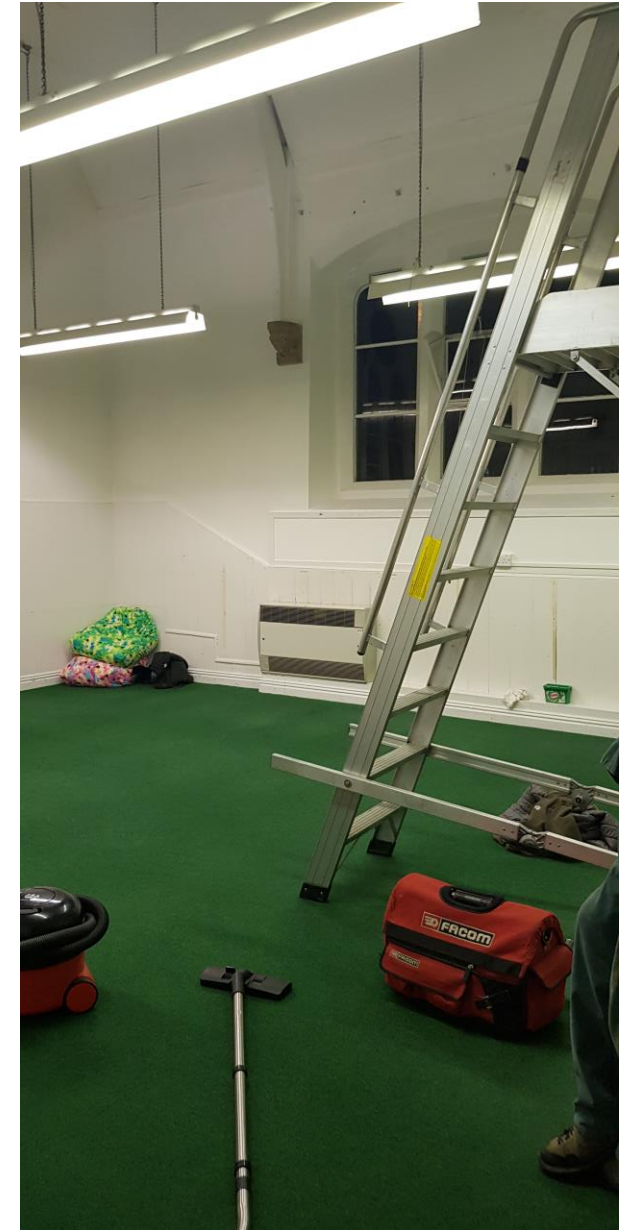
B011 now home to Carly's start-up business



B012 – before any work began



B012 – work-in-progress, including new LED lighting.



B012 – now ‘The Space’ and home for Andi’s and Vicky’s framework and equipment for sensory therapy.



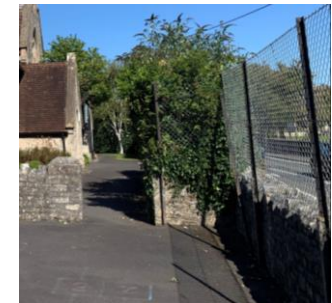
Area 3: External – gardens, playground, vehicle parking



**Happy
Volunteers
after a good
morning's
weeding.**

External – the frontage of the site

Before



Today - growth reduced to railing level and all institutional fencing removed. Listed railings in process of repaint.





The garden shed and the tool shed. Left = before, right = today



Previously the pre-school play area. To be restored into a children's play area. Beyond the coloured fencing is to become a 'secret garden'.



To become the Men's Shed. The growth has been cleared but the painting is yet to be done.



The Bike Shed – now also a smoking/vaping shelter (the site is ‘no smoking/no vaping’)

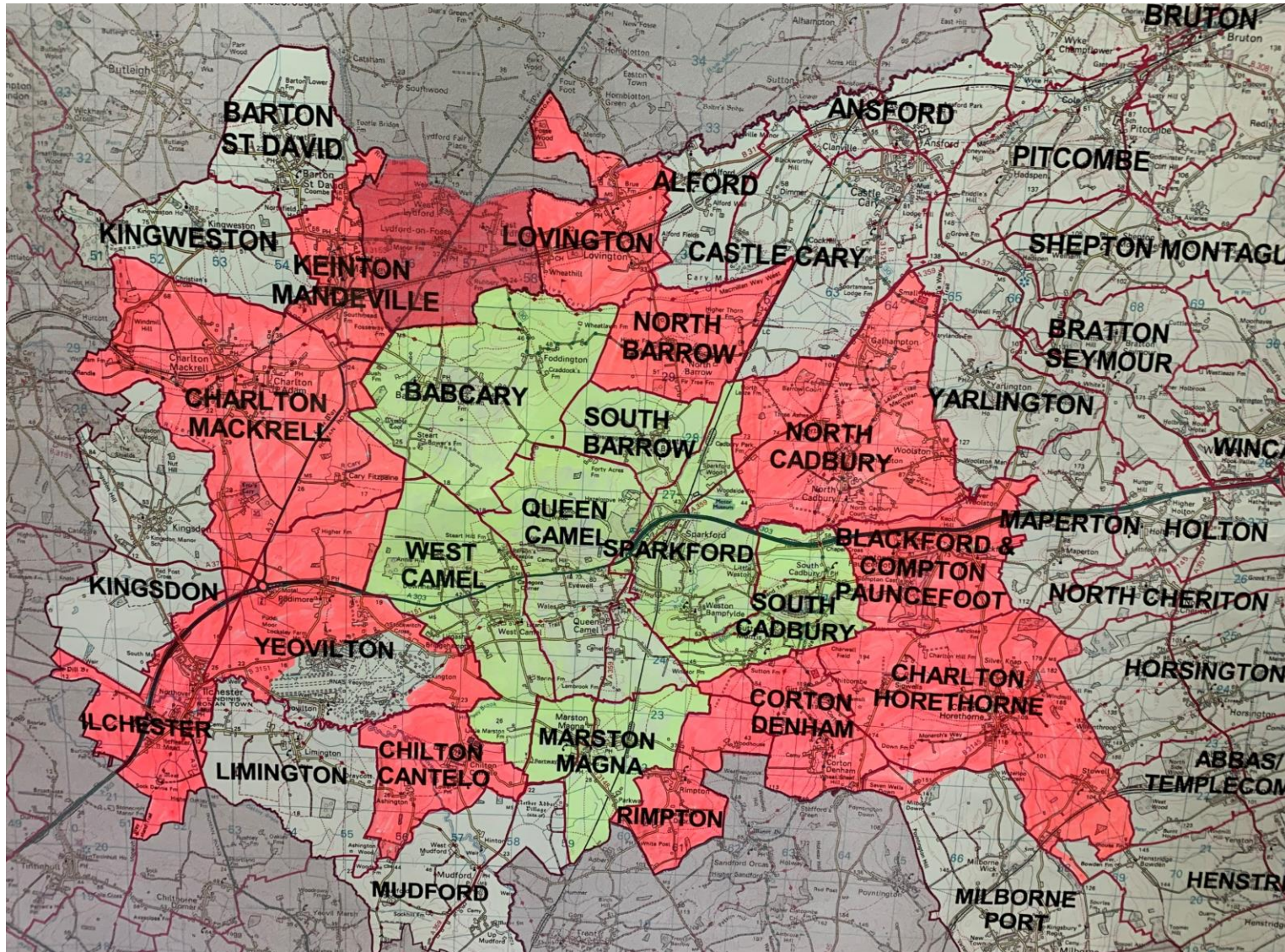
Before



Today

Photo to come

Miscellaneous – our local and wider community



The Long Road to restoring the Old School - 2019/2020

Miscellaneous



During the first ten months we held various open events, always with refreshments.

Art Gallery to be



Art by Harris, who designed our logo.



I am a portrait artist living and working in Queen Camel. I specialise in creating pencil drawings which range from people and pets to cars and buildings.

After studying Fine Art and Design and gaining a degree at the University of Creative Arts I have continued to draw a mixture of contemporary, wildlife and commissioned work. I slowly received more and more commissions for people's families/pets and I now specialise in highly detailed wildlife and traditional family and pet portraits in either graphite pencil or coloured pencil.

I am also a qualified teacher and hope to be running Art classes in the Old School community centre. For more information please email me at Alannah.artwork@gmail.com
www.alannahbarker.com

Alannah now teaches in the evening at the Old School.





Used for our
first
Christmas
card.